

Enhance your
understanding
of the natural
world and our
place in it.



SPNHC

ADVANCING COLLECTIONS CARE



Our ability to understand the natural world depends on the collection, preservation and ongoing study of natural history specimens. These collections are the physical record of Earth's life forms and processes.

The systematic organization of natural science collections gives us the means to understand the Earth's formation and the diversity of life. In turn, the study of such collections allows us to forecast the future of the planet—information that profoundly affects our lives.



← *Albertosaurus* skull
Photo: Justine Cooper

Natural history collections are the foundation for our understanding of the Earth's life forms and processes.

Objects in natural history collections form a physical inventory of our cultural, biological and geological heritage and enhance our understanding of our world and our place in it. The information they hold is inestimable and their physical value increases with every new technology to emerge.

Natural history collections play a substantial role in:

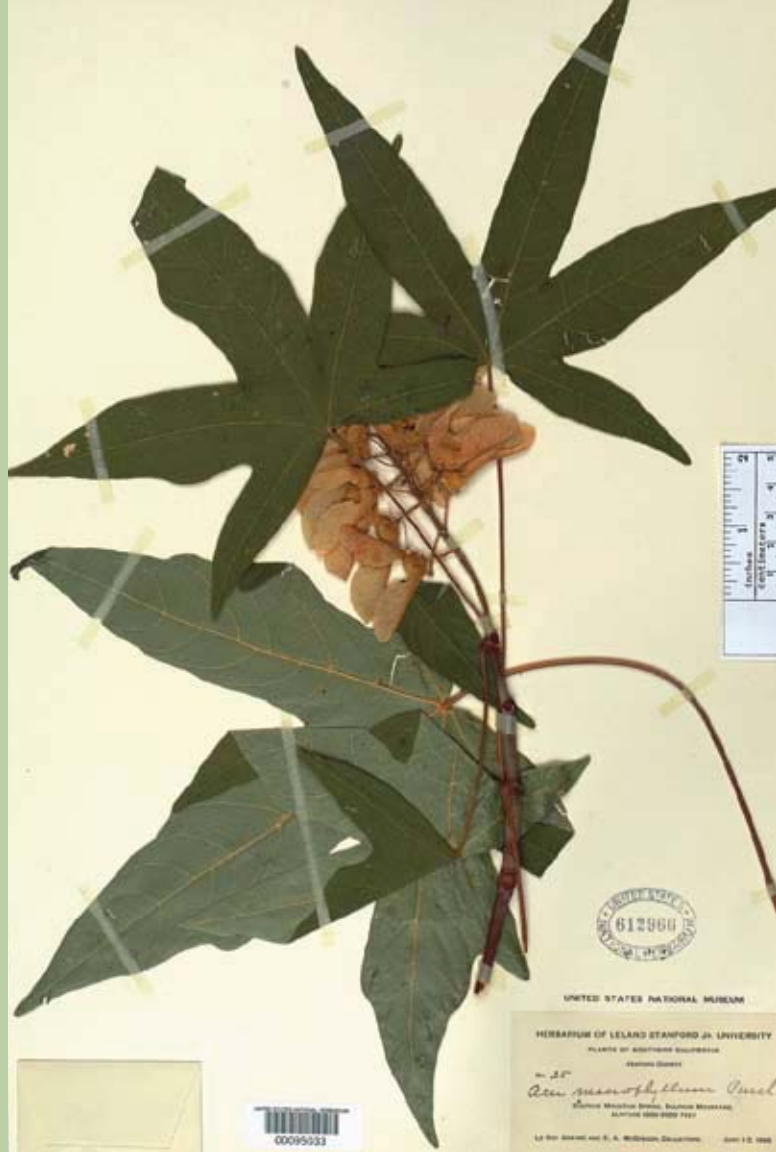
- Understanding biodiversity
- Supporting nature conservation
- Furthering education
- Serving the community

Natural history collections are used to:

- Identify and describe new species of plants and animals
- Reconstruct evolution and the tree of life
- Support research in medicine and human health
- Provide the basis for exhibitions and educational programs

Organization, documentation, and preservation of natural history collections enable us to reconstruct Earth's past, understand the present, and forecast the future.

Collection managers are responsible for ensuring that natural history collections are preserved for use both today and in generations to come. They also need to ensure that the collections are accessible for a wide variety of uses. The two functions of preservation and accessibility sometimes can be at odds with each other. The Society for the Preservation of Natural History Collections (SPNHC) can help its members develop best practices that assist in decision-making. SPNHC is devoted to the preservation, conservation and management of natural history collections.



UNITED STATES NATIONAL MUSEUM

HERBARIUM OF LELAND STANFORD JR. UNIVERSITY
PLANTS OF BOTANICAL GARDENS

STANFORD UNIVERSITY

no. 25
Acer macrophyllum Pursh

Native Mountain State, Bull Run Mountain,
ALABAMA (near 1900)

Dr. R. Sargent and R. A. Whittaker, Occasions: July 12, 1966





← Shell

Photo: Justine Cooper

Our members:

Identify, Catalog, and Document

Correct identification and organization of specimens and their associated information is critical for the use of collections and requires experience and specialist knowledge.

Prepare, Preserve, and Conserve

Ensuring the future availability of collections and their supporting documentation depends on a holistic approach to their care as well as the correct use of conservation and preparation materials and techniques.

Research and Develop

SPNHC members carry out specimen-based research, and also research to develop new techniques for specimen care and preservation.

Share

From physical access to digitization and databasing, our members make collections accessible for use today and into the future.

Advocate and Educate

SPNHC takes a leading role in promoting collections care issues to the academic community, government, and the general public. Its members are dedicated to training and mentoring the next generation of collections professionals.

Katydid grasshoppers
Photo: Justine Cooper



← “The Mammals of Australia,” John Gould, 1845-1863
Photo: Justine Cooper



Membership Benefits

SPNHC is an international organization. Membership gives you access to a lively, active, and interdisciplinary global community of professionals dedicated to the care of natural history collections. SPNHC's membership is drawn from more than 20 countries and includes museum specialists such as curators, collections managers, conservators, preparators, and database administrators.

The Society hosts annual meetings and sponsors symposia and workshops to foster the exchange of ideas and information.

Some recent topics include:

- Emergency Preparedness, Response, and Salvage
- Use of Digital Technology in Museums
- Hazardous Collections and Mitigation
- Integrated Pest Management

SPNHC produces several publications. Foremost among these is Collection Forum, an annual, refereed journal on all aspects of natural history collections management and conservation. SPNHC also publishes a bi-annual Newsletter, and technical leaflets that examine various aspects of natural history collections care, development and management. The Society also has a growing list of stand-alone books.

Titles include:

- Managing the Modern Herbarium
- Museum Studies: Perspectives and Innovations
- MuseumWise: Workplace Words Redefined
- Storage of Natural History Collections: A Preventive Conservation Approach
- Storage of Natural History Collections: Ideas and Practical Solutions

For a complete library list visit: www.spnhc.org





← Bella Roca meteorite

Photo: Christopher Ebel

Please detach and mail the above
with your payment to:

SPNHC
Planetarium Station
P.O. Box 526
New York, NY 10024-0526
USA

Or please join online at <http://spnhc.org/>

Membership Rates

Life-member Plan 1 \$1,125
Single payment

Life-member Plan 2 1st Year \$610
2 installments = (1st year \$610) (2nd year \$515)

Life-member Plan 3 1st year \$560
3 installments = (1st year \$560) (2nd year \$375) (3rd year \$190)

Corporate/Commercial \$350

Institutional /Associate \$75
(please include name of voting representative)

Library/Subscription Service \$55

Regular \$45

Student, certified \$20

Name _____

Address _____

City _____ State _____

Country _____ Zip Code _____

Phone No. _____ Fax No. _____

Email: _____

Please check this box if you do NOT wish to appear in the SPNHC membership directory

Credit cards are only accepted through our online system. Go to <http://spnhc.org/13/become-a-member>

Signature: _____

Print name: _____

Total Amount Charged: _____ (in U.S. dollars)

Check drawn in U.S. dollars.

Make checks payable to:

Society for the Preservation of Natural History Collections (SPNHC).

Compact storage for ethnographic artifacts

Photo: Justine Cooper





SPNHC

ADVANCING COLLECTIONS CARE



PLACE
STAMP
HERE

SPNHC Treasurer

Planetarium Station, P.O. Box 526
New York, NY 10023-0526 USA

Cover: Horn sharks (*Heterodontus francisci*)
Photo: Justine Cooper

